

DLS ENGINEERING SDN BHD (1051682-D)



FILE

Table of Contents

- Introduction_____2
- The Management_____3
- Corporate Information_____4
- Market Segmentation & Services Provided_____5-6
 - *New Unit Sales*
 - *Reman Unit Sales*
 - *Spare Parts & Tools*
 - *Maintenance*
 - *Repair, refurbishment & painting works*
 - *Training*
 - *Manpower Supplies*
- Associate Business Partners_____7
- Our Services and strength_____8-11
- Client's Benefits_____12
- Environment, Safety & Health Policy Statement_____13
- Contract Options_____13
- Contacting Us_____14

INTRODUCTION



DLS Engineering Sdn. Bhd (DLSESB). was established in Mid-2013 and is a Malaysian based Bumiputera Company that specializes in providing all kinds of engineering work including maintenance, repair, overhaul and supply of new and reconditioned/rebuilt of all kind of Industrial & commercial Engine & Transmission, machinery & Equipments. We apply a flexible, innovative approach tailored to meet our client requirements in the provision of the services and relieve our clients of the distracting chores of servicing, maintenance and/or managing vehicles, or assets, relating to **all kind of Engineering works, Machinery & Equipments** application, thereby permitting them to fully concentrate on their primary business activities.

The upsurge in the economic activity in major industry and subsequent development of commerce and Port industry gave further boost to **DLSESB** philosophy. We realized that despite the numerous **requirements** and **engineering service** providers in Malaysia, there was a need for professionally managed of one-stop solution provider with applicable genuine agency and full support from the manufacturer or principal. It is this that brought **DLSESB** into existence.

Since the foundation of the company our essential ingredient of overall philosophy has been to strive for excellence and become the primary providers of competitive, efficient and reliable products and resource solutions. The high regards in which we are held today bears testimony to the measure of success, which we have been able to achieve. A crucial element of our philosophy has been to establish trust and authenticity amongst our clients and amongst the people that make up our database. Thus our motto is "**Services provider to Clients and Concern for People.**"

DLSESB. Greatest strength is in its experienced and dedicated technical and management team. This core team comprises of experienced professional managers, engineers, and specialists who remain versatile in the fast paced & challenging business environment of today. **DLSESB** acknowledges the importance of Customer Relationship management by aiming to do the following: -



It is our Vision:

- To be preferred as Engineering services, Machinery / Equipments and Solution Provider

It is our Mission:

- To achieve the highest standards of safety and security
- To inculcate workforce that is highly result-oriented
- To attain service efficiency and consistency through customer-centric processes
- To promote value-added commercial practices
- To generate on-going sustainable values for shareholders and
- To always exceed the expectations of our customers and partners

THE MANAGEMENT

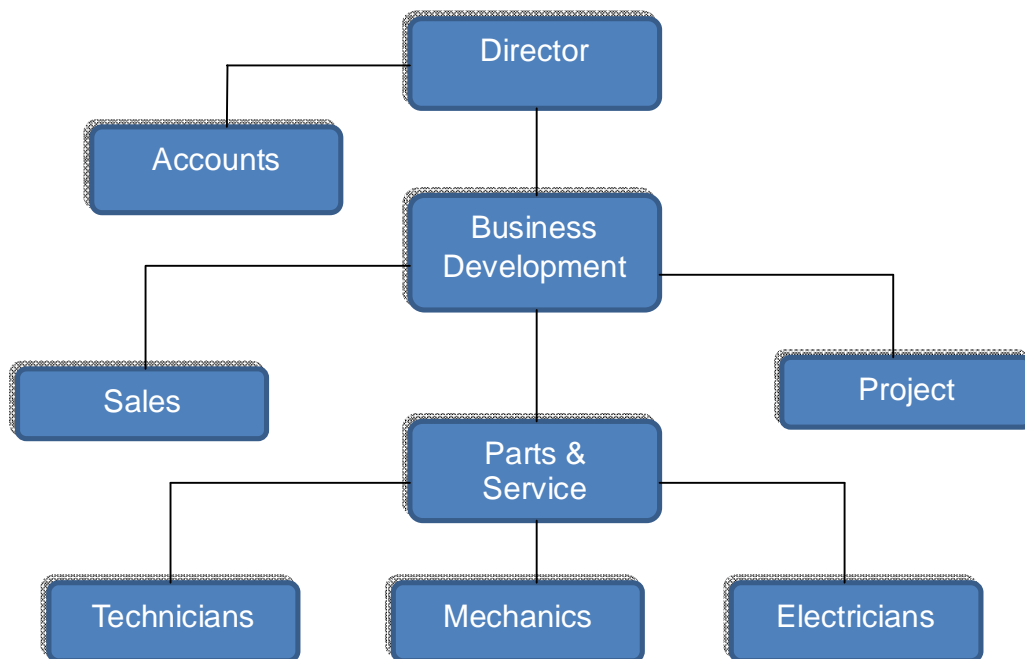
1. Director
2. Business Development Manager
3. Manager (Project & Service Support)
4. Accounts Manager

Pn Zareni Binti Ismail

En. Saiful Adli Bin Mohamed Mazlan

En. Azlan Bin Abd Karim

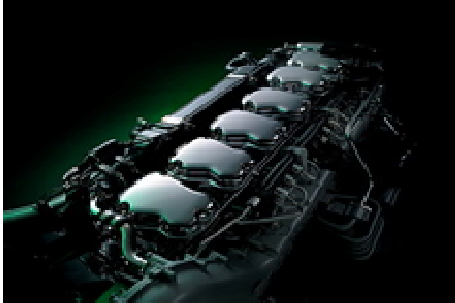
Pn. Noralwiyah Binti Rosnan



CORPORATE INFORMATION

Name	:	DLS ENGINEERING SDN BHD
Corporate Office Service / Parts Center	:	No. 24, Jalan Batu Belah 27/96, Seksyen 27, 40400 Shah Alam, Selangor D. E., Malaysia.
Company Registration No.	:	1051682 – D
Company GST Registration No.	:	000718983168
Corporate Status	:	Private Limited Company
Date Incorporated	:	26 th June 2013
Paid Up Capital	:	RM 370,800.00
Authorized Capital	:	RM 400,000.00
Company Secretary	:	NBC Secretarial Sdn Bhd No. 79A & 79B, 1 st & 2 nd Floor, Jalan SS21/37 Damansara Utama, 47400 Petaling Jaya, Selangor D. E.
Lawyer	:	Ming, Yee & Co. No. C-2-45, Level 2, IOI Boulevard, Jalan Kenari 5, Bandar Puchong Jaya, 47170 Puchong, Selangor D. E.
Bankers	:	Maybank Berhad. 66 Jalan USJ 10/1b, Taipan Business Centre, 47620 Subang Jaya, Selangor D. E.
Phone	:	+603 – 51037798
Fax	:	+603 – 51039799

MARKET SEGMENTATION & SERVICES PROVIDED



DLSESB set up its facilities and fully equipped to provide all related maintenance, repair and overhaul of Industrial & commercial Engine & Transmission, machinery & Equipments units. With our capital investment on critical equipment, i.e. dyno tester, valve calibration tester and complete range of diagnostic software and special tools for the latest model of Engine & Transmission, our customers and users are well assured that our services is of high quality and in line with manufacturer standard practice and guidelines. Our experience, trained and certified personnel are being developed continuously to enhance their skills, knowledge and know how on the technical aspects of the product.

DLSESB- Talented Team

A strategic vision does not define a company's success, its people do. We have some of the most talented and technically advanced team members in the industry and our clients see that. All team members are encouraged to ask questions, make recommendations, and continuously improve systems and techniques. We encourage an environment of collaboration, knowledge sharing, and innovation, which translates to better service for our clients.

DLSESB engineers and mechanics are on call 24 hours a day to support our customer base with on-site planned maintenance and ad-hoc maintenance, repair and services. Our Service Center is well equipped to carry out full major overhaul and testing. We believe in providing our customers a one stop center for all range engines, transmission applications and parts sourcing, we have categorized our services as follows:

- **New Unit Sales**
- **Reman Unit Sales**
- **Spare Parts & Tools**
- **Maintenance**
- **Repair**
- **Training**
- **Manpower Supply**
(Unskilled, Semi-skilled, Skilled)



Our Services as mentioned includes:

1. **Spare parts and special tools** – The speedy supply of spare parts is crucial if power train and drive systems are to be maintained efficiently in order to ensure that a vehicle or equipment achieves optimum operational availability. That is why a rapid and reliable spare parts service is the main pillar of our Product Support Organization. To cope with speedy response and work effective and efficiency, **DLSESB** has a complete of special tools for all type of engines, such as Caterpillar, Cummins, Detriot Diesel, Volvo, Perkins, VM Motori & so for.
2. **Maintenance** – With our flexible maintenance concept, we match the maintenance intervals optimally to the application and the service conditions with recommendation and guideline. This improves availability and reduces operating and maintenance costs. Our maintenance system is based on extensive experience and component calculations, allowing us to make accurate estimates on maintenance intervals. Our preventive and duration-related maintenance concept is based on this accumulation of know-how.
3. **Repair, Refurbishment works** – We offer our services for products that we supplied under close supervision and technical assistance by our certified personnel. Engineering works, Engines/transmissions and subsystems are completely disassembled; the individual parts are then scrutinized critically to decide whether they are suitable for further use. After reassembly, are subjected to extensive testing, covering all major operating parameters.
4. **Training for operation & maintenance** - Optimum operation of a powertrain and related electronic systems with respect to economy, availability and reliability can be achieved only through correct operation and maintenance. The goal of experienced instructors from **DLSESB** is to provide sound information on operation, maintenance and repair through well-structured courses. **DLSESB** arrange training on engine/transmission, assemblies and electronic systems which available at our training solution center. The courses are held based on clients requirement and are adapted to the level of knowledge and experience of the course participants.
5. **On-site Support** – Intensive product support on site is a matter of course for **DLSESB**. In addition to personnel from our establishment, representatives are available to provide critical support to our clients. A constant exchange of information as well as continuous expansion of our know-how puts us in the position to be able to offer our customers optimum solutions. Periodic visits by our product-support experts contribute to successful partnership with our customers.

To sum up our service categorization, we are still looking out for ways to serve our customers better and we still do not think of sitting back, as **"Success is a Journey and not a destination"**.



ASSOCIATE BUSINESS PARTNERS



**VOLVO
PENTA**

CLARK

Genuine Transmission Parts



CATERPILLAR®



OUR SERVICES & STRENGTH

a) ENGINE & TRANSMISSION REPAIR AND OVERHAUL



b) Forklift (any tonnage with variety of brand): Refurbishment, Service, Maintenance, Repair and Overhauling.



c) Crane (type of cranes): Refurbishment, Service, Maintenance, Repair and Overhauling.



d) Construction Equipment's: Refurbishment, Service, Maintenance, Repair and Overhauling.



e) Refurbishment, Repair Pontoon & under water works



f) Air Compressor (Range of CMF): Refurbishment, Service, Maintenance, Repair and Overhauling.



g) Towing Truck: Refurbishment, Service, Maintenance, Repair and Overhauling.



h) Port Material Handling Equipment: Refurbishment, Service, Maintenance, Repair and Overhauling.



i) Engineering works to design, fabricate & build



j) Refurbishment, Service, Maintenance, Repair Hull, Body & Propulsion System



k) Diesel Generator (Prime & Standby): Service & Maintenance, Repair & Overhaul for building or construction AND rental.



l) Hydraulic Hose & Fitting: With ready equipment for any fabrication.



CLIENT'S BENEFIT

Focus	Allows the client to fully focus on core business without distraction from maintenance or management issues.
Cost	When equipment, machinery or vehicles are well-maintained, there will be less breakdown or parts replacement. This results in lower overall maintenance and inventory costs. Indirect cost savings can be realized thru less downtime, which results in an increase in productivity.
Efficiency	DLSESB , Talented Team assured customers worries free as we provide quality services and efficiently.
Equipment	Increased equipment availability, reliability, safety, reduced downtime, extended equipment service life span.
Personnel	Optimized staff utilization. Reduce or eliminate the requirement to employ maintenance personnel for facility management and maintenance works.
Expertise	Access and availability to a pool of facility experts to provide professional facilities solutions reduce research and other evaluation cost.
Flexibility	DLSESB provides expertise in multi-dimensional areas to meet client needs.
Control	Control is all-important in operating a building efficiently and providing the required service to clients and users. Maintenance management system allows tasks to be planned and provides effective control of resources.
Information	Instant availability of information and record of services and the maintenance activities conducted within client's premises.
Reports	Detailed reports available in many formats to satisfy corporate and financial management decision needs.
Budgets	Create detailed budgets for cost centers and allow close control of budgets.

ENVIRONMENT, HEALTH, & SAFETY POLICY STATEMENT

Our Commitment is....

- To promote and ensure to the best of our ability a safe and healthy working environment for employees
- To provide the necessary training, information, instruction, and supervision required to ensure a safe and healthful workplace for employees
- To comply with occupational safety and health regulations, guidelines, standards, policies, procedures, and practices.
- To avoid occupational injury, illness or damage to our clients' property, equipment or environment.

CONTRACT OPTIONS

DLSESB offers several contract options for our services. The associated financial options provide clients with the flexibility on the scope of client's involvement in the facilities management programs. Contracts are generally recommended for a minimum of five years but are orientated to a long-term relationship with our clients so that we can best take care of our clients' interest.

Each contract is developed with consideration of its individual needs and can be either:-



Fixed Management Fee (Monthly, Quarterly, Annually)



Lump Sum



Contract Basis



Performance Related Fee



Combination of the above

DLSESB prefers to pay all expenses directly to specialist contractors instead of channeling them to the client, our client only needs to certify and effect only one payment. The above arrangement is efficient and eliminates administrative cost to the client. It also challenges our effort to minimize cost without jeopardizing quality.

Whichever method is preferred, we are committed to ensure that the clients' interest in quality of services is assured and that the options selected are flexible to serve the clients' needs.

CONTACTING US

Corporate Office

No. 24, Jalan Batu Belah 27/96,
Seksyen 27, 40400 Shah Alam,
Selangor Darul Ehsan, Malaysia.

Contact Person	:	Mr. Saiful Adli Bin Mohamed Mazlan
Phone	:	+603 5103 7798
Fax	:	+603 5103 9799
HP No.	:	+6012 265 9178
E-mail	:	saiful@dlsebs.com.my

Accounts

Contact Person	:	Ms. Noralwiyah Binti Rosnan
Phone	:	+603 5103 7798
Fax	:	+603 5103 9799
	:	
E-mail	:	nora@dlsebs.com.my

Parts & Service Center

No. 24, Jalan Batu Belah 27/96,
Seksyen 27, 40400 Shah Alam,
Selangor Darul Ehsan, Malaysia.

Contact Person (Sales/Parts)	:	Mr. Nelson Ng
Phone	:	+603 5103 7798
Fax	:	+603 5103 9799
HP No.	:	+6012 278 4988
E-mail	:	nelson_ng@dlsebs.com.my

Contact Person (Service)	:	Mr. Azlan Bin Abdul Karim
Phone	:	+603 5103 7798
Fax	:	+603 5103 9799
HP No.	:	+6016 211 3901
E-mail	:	azlan@dlsebs.com.my